

Arizona Environmental Online Review Tool Report



Arizona Game and Fish Department Mission

To conserve Arizona's diverse wildlife resources and manage for safe, compatible outdoor recreation opportunities for current and future generations.

Project Name:

San Luis Natural Gas Feasibility Project

Project Description:

A preliminary feasibility study to understand any environmental disturbances by laying natural gas distribution pipelines between Yuma and San Luis Rio Colorado.

Project Type:

Energy Storage/Production/Transfer, Energy Transfer, pipeline (gas/oil, new)

Contact Person:

Sud Haldar

Organization:

Berkeley Research Group

On Behalf Of:

CITY

Project ID:

HGIS-12232

Please review the entire report for project type and/or species recommendations for the location information entered. Please retain a copy for future reference.

Disclaimer:

1. This Environmental Review is based on the project study area that was entered. The report must be updated if the project study area, location, or the type of project changes.
2. This is a preliminary environmental screening tool. It is not a substitute for the potential knowledge gained by having a biologist conduct a field survey of the project area. This review is also not intended to replace environmental consultation (including federal consultation under the Endangered Species Act), land use permitting, or the Departments review of site-specific projects.
3. The Departments Heritage Data Management System (HDMS) data is not intended to include potential distribution of special status species. Arizona is large and diverse with plants, animals, and environmental conditions that are ever changing. Consequently, many areas may contain species that biologists do not know about or species previously noted in a particular area may no longer occur there. HDMS data contains information about species occurrences that have actually been reported to the Department. Not all of Arizona has been surveyed for special status species, and surveys that have been conducted have varied greatly in scope and intensity. Such surveys may reveal previously undocumented population of species of special concern.
4. HabiMap Arizona data, specifically Species of Greatest Conservation Need (SGCN) under our State Wildlife Action Plan (SWAP) and Species of Economic and Recreational Importance (SERI), represent potential species distribution models for the State of Arizona which are subject to ongoing change, modification and refinement. The status of a wildlife resource can change quickly, and the availability of new data will necessitate a refined assessment.

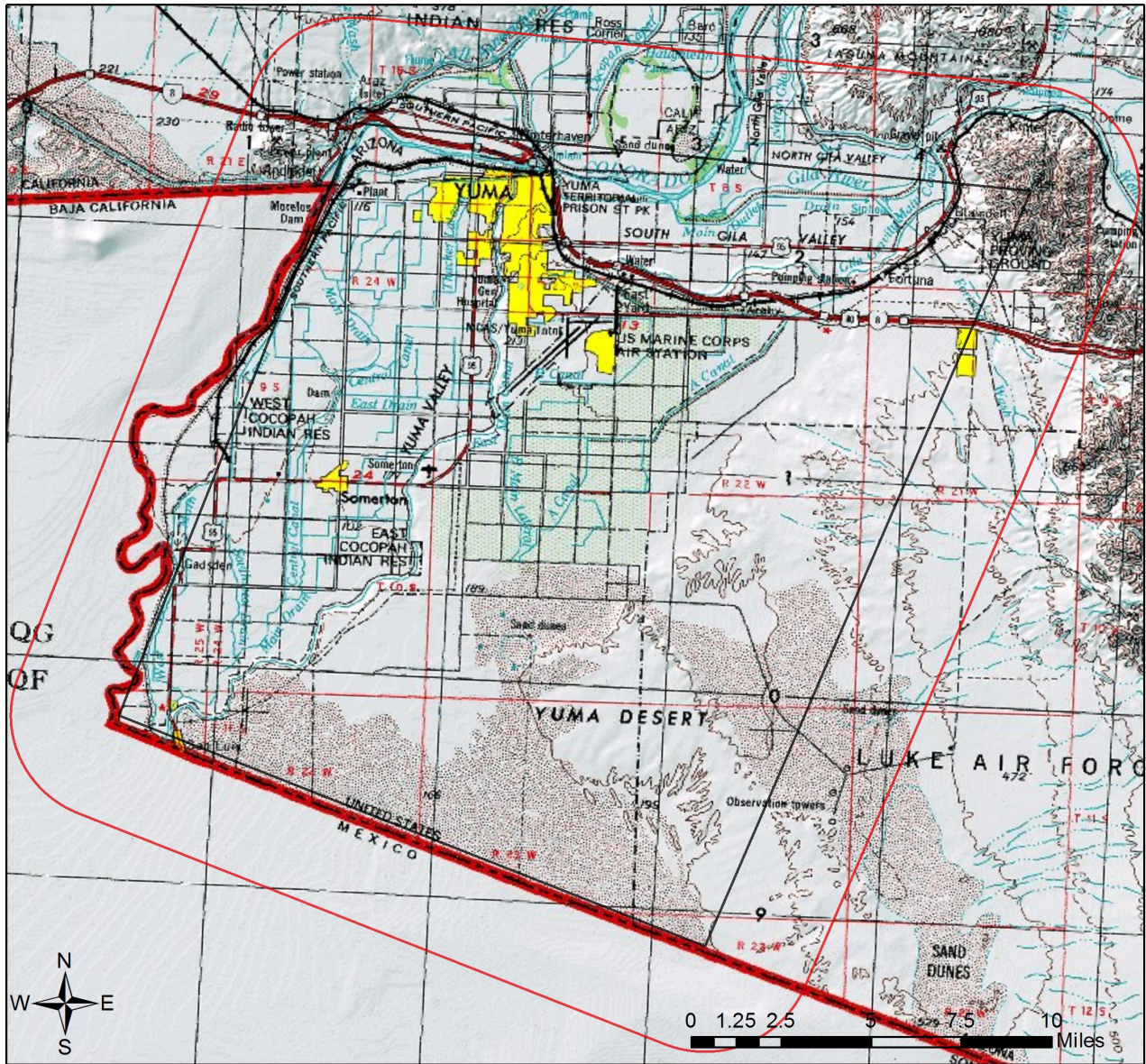
Locations Accuracy Disclaimer:

Project locations are assumed to be both precise and accurate for the purposes of environmental review. The creator/owner of the Project Review Report is solely responsible for the project location and thus the correctness of the Project Review Report content.

Recommendations Disclaimer:

1. The Department is interested in the conservation of all fish and wildlife resources, including those species listed in this report and those that may have not been documented within the project vicinity as well as other game and nongame wildlife.
2. Recommendations have been made by the Department, under authority of Arizona Revised Statutes Title 5 (Amusements and Sports), 17 (Game and Fish), and 28 (Transportation).
3. Potential impacts to fish and wildlife resources may be minimized or avoided by the recommendations generated from information submitted for your proposed project. These recommendations are preliminary in scope, designed to provide early considerations on all species of wildlife.
4. Making this information directly available does not substitute for the Department's review of project proposals, and should not decrease our opportunity to review and evaluate additional project information and/or new project proposals.
5. Further coordination with the Department requires the submittal of this Environmental Review Report with a cover letter and project plans or documentation that includes project narrative, acreage to be impacted, how construction or project activity(s) are to be accomplished, and project locality information (including site map). Once AGFD had received the information, please allow 30 days for completion of project reviews. Send requests to:
Project Evaluation Program, Habitat Branch
Arizona Game and Fish Department
5000 West Carefree Highway
Phoenix, Arizona 85086-5000
Phone Number: (623) 236-7600
Fax Number: (623) 236-7366
Or
PEP@azgfd.gov
6. Coordination may also be necessary under the National Environmental Policy Act (NEPA) and/or Endangered Species Act (ESA). Site specific recommendations may be proposed during further NEPA/ESA analysis or through coordination with affected agencies

San Luis Natural Gas Feasibility Project USA Topo Basemap With Locator Map



- Project Boundary
- Buffered Project Boundary

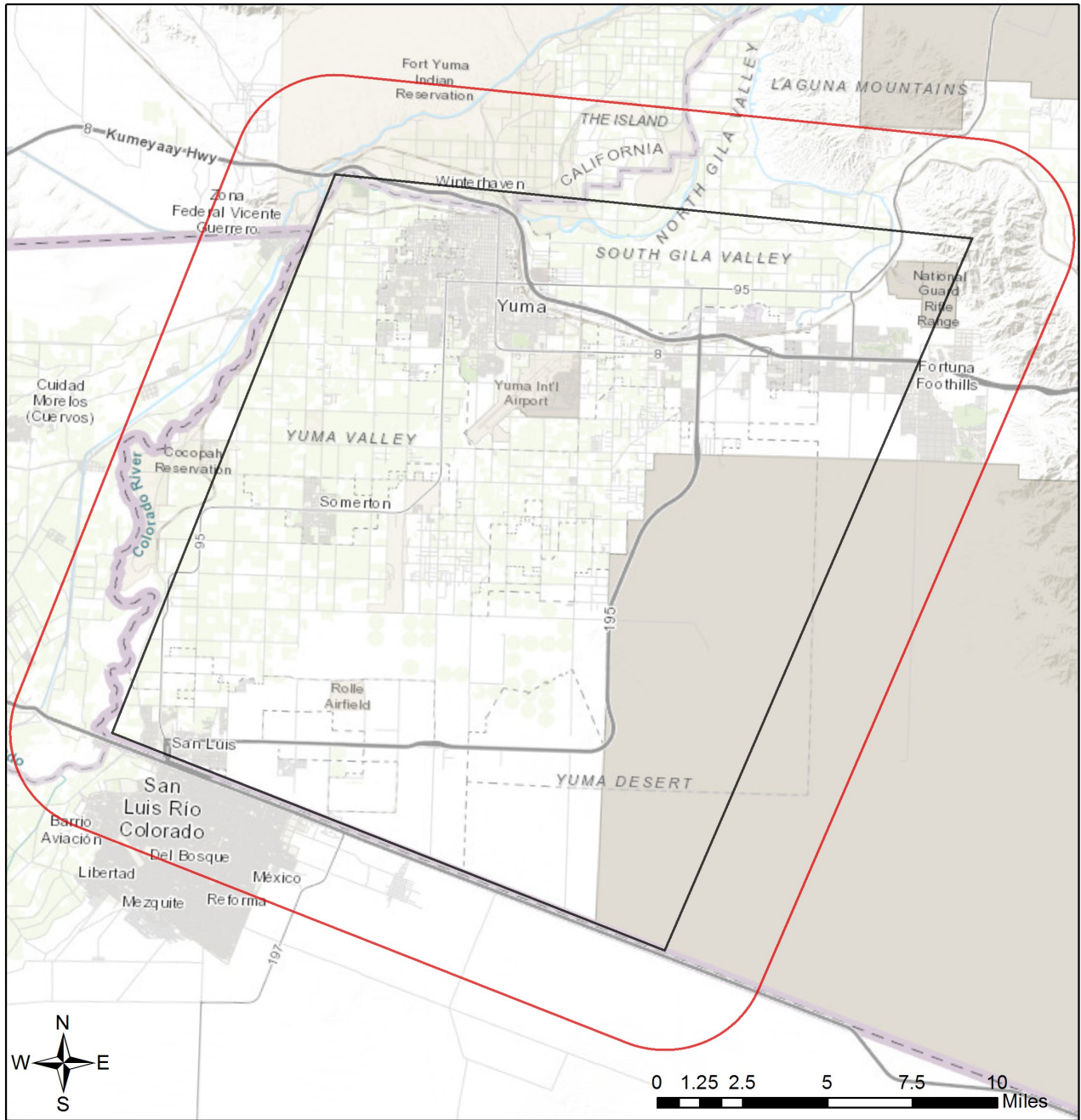
Project Size (acres): 235,957.14
 Lat/Long (DD): 32.5933 / -114.6016
 County(s): Yuma
 AGFD Region(s): Yuma
 Township/Range(s): T10S, R21W; T10S, R22W +
 USGS Quad(s): FORTUNA; FORTUNA SW +

Service Layer Credits: Sources: Esri, HERE, Garmin, Intermap, increment P Corp., GEBCO, USGS, FAO, NPS, NRCAN, GeoBase, IGN, Kadaster NL, Ordnance Survey, Esri Japan, METI, Esri China (Hong Kong), (c) OpenStreetMap



San Luis Natural Gas Feasibility Project

Web Map As Submitted By User



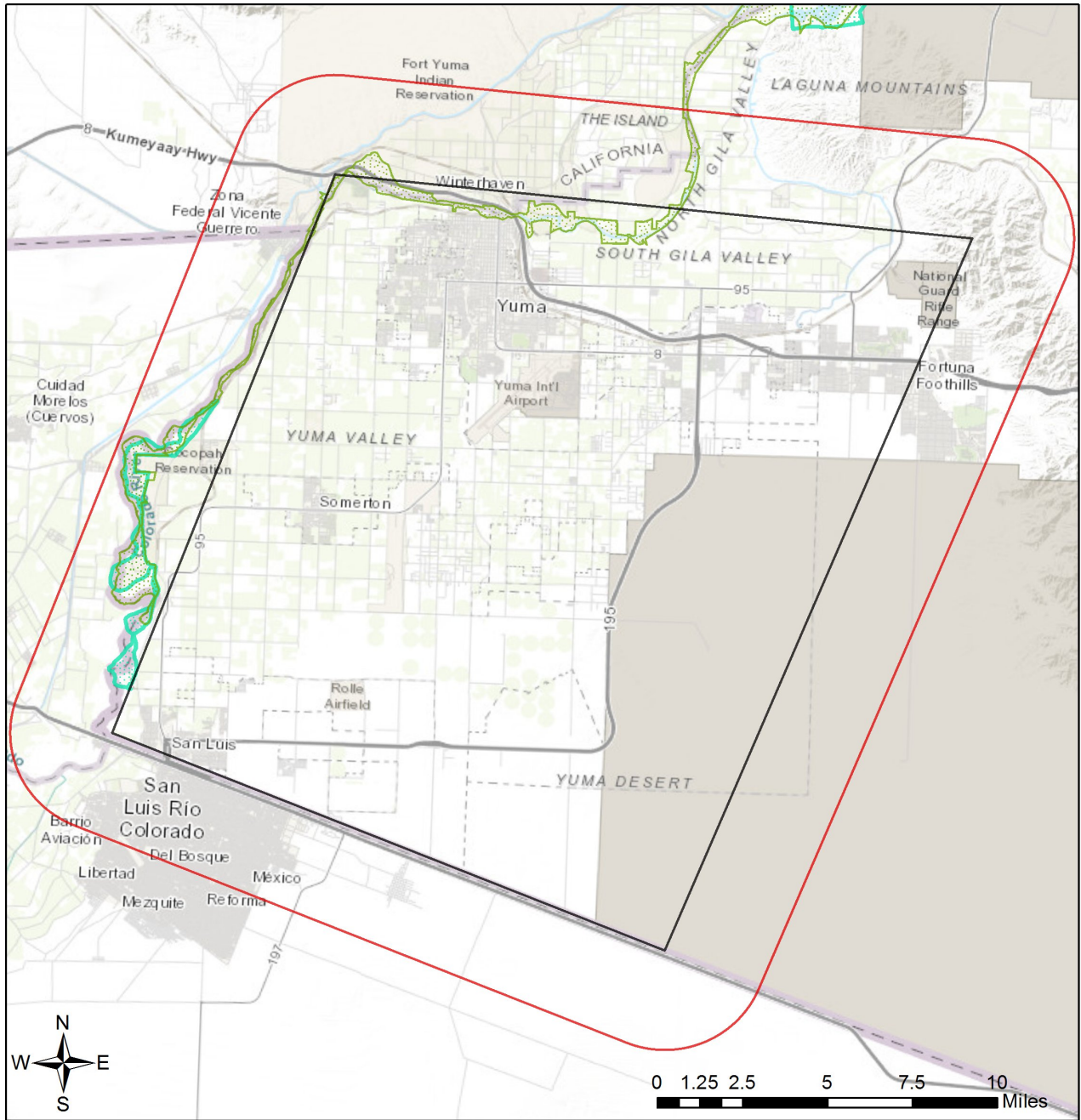
- Project Boundary
- Buffered Project Boundary

Project Size (acres): 235,957.14
Lat/Long (DD): 32.5933 / -114.6016
County(s): Yuma
AGFD Region(s): Yuma
Township/Range(s): T10S, R21W; T10S, R22W +
USGS Quad(s): FORTUNA; FORTUNA SW +

Sources: Esri, HERE, Garmin, Intermap, increment P Corp., GEBCO, USGS, FAO, NPS, NRCAN, GeoBase, IGN, Kadaster NL, Ordnance Survey, Esri Japan, METI, Esri China (Hong Kong), (c) OpenStreetMap contributors, and the GIS User Community

San Luis Natural Gas Feasibility Project

Important Areas



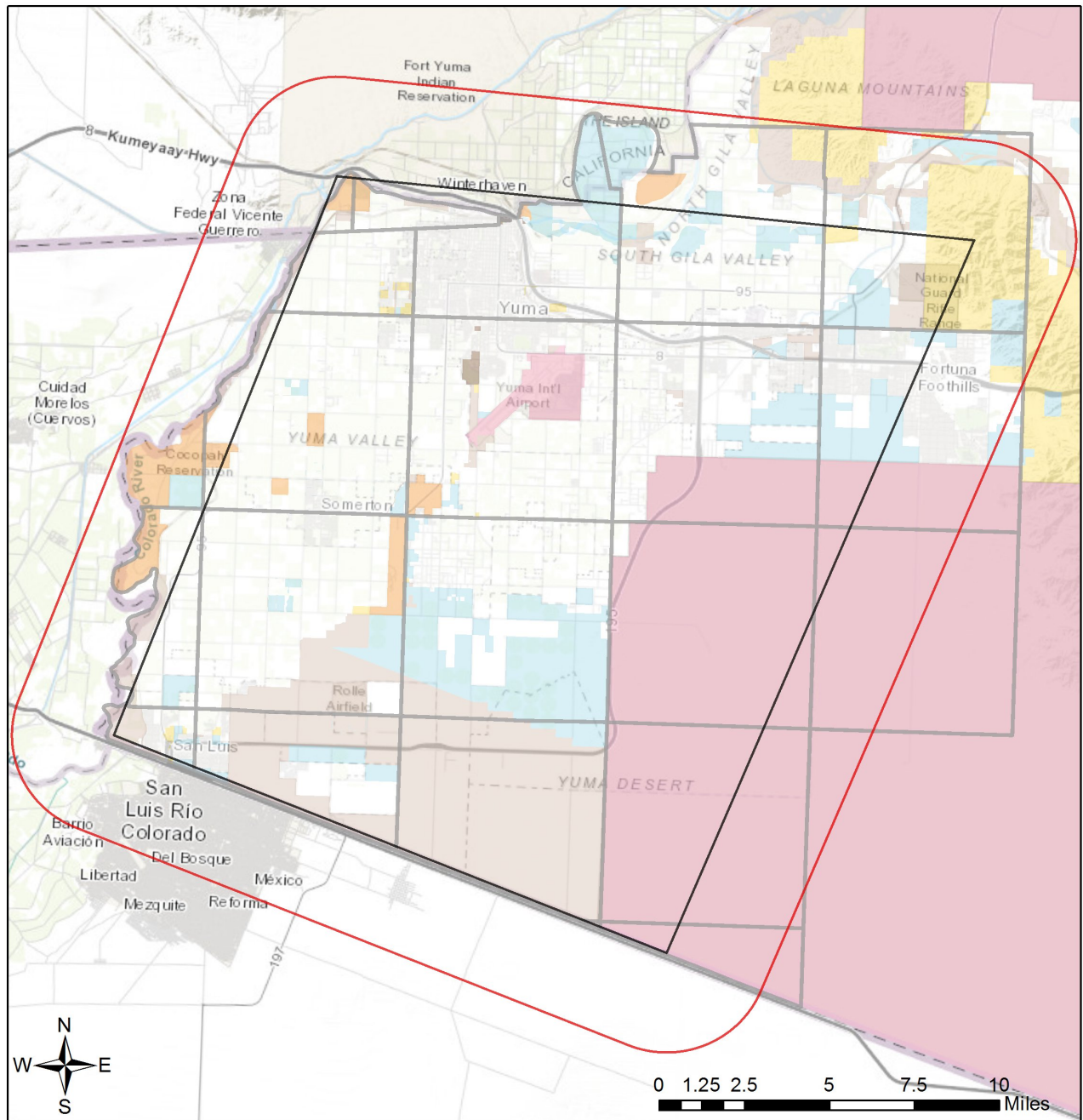
- Project Boundary
- Buffered Project Boundary
- Wildlife Connectivity
- Important Connectivity Zones
- Critical Habitat
- Important Bird Areas

Project Size (acres): 235,957.14
 Lat/Long (DD): 32.5933 / -114.6016
 County(s): Yuma
 AGFD Region(s): Yuma
 Township/Range(s): T10S, R21W; T10S, R22W +
 USGS Quad(s): FORTUNA; FORTUNA SW +

Sources: Esri, HERE, Garmin, Intermap, increment P Corp., GEBCO, USGS, FAO, NPS, NRCAN, GeoBase, IGN, Kadaster NL, Ordnance Survey, Esri Japan, METI, Esri China (Hong Kong), (c) OpenStreetMap contributors, and the GIS User Community

San Luis Natural Gas Feasibility Project

Township/Ranges and Land Ownership



- | | |
|--------------------------------------------------------------------------------------------------------------------------|---------------------------------------------------------------------------------------------------------------------------|
| Project Boundary | Military |
| Buffered Project Boundary | Mixed/Other |
| Township/Ranges | National Park/Mon. |
| Land Ownership | |
| AZ Game & Fish Dept. | State & Regional Parks |
| BLM | State Trust |
| BOR | US Forest Service |
| Indian Res. | Wildlife Area/Refuge |

Project Size (acres): 235,957.14
 Lat/Long (DD): 32.5933 / -114.6016
 County(s): Yuma
 AGFD Region(s): Yuma
 Township/Range(s): T10S, R21W; T10S, R22W +
 USGS Quad(s): FORTUNA; FORTUNA SW +

Sources: Esri, HERE, Garmin, Intermap, increment P Corp., GEBCO, USGS, FAO, NPS, NRCAN, GeoBase, IGN, Kadaster NL, Ordnance Survey, Esri Japan, METI, Esri China (Hong Kong), (c) OpenStreetMap contributors, and the GIS User Community

Special Status Species Documented within 3 Miles of Project Vicinity

Scientific Name	Common Name	FWS	USFS	BLM	NPL	SGCN
Athene cunicularia hypugaea	Western Burrowing Owl	SC	S	S		1B
Coccyzus americanus	Yellow-billed Cuckoo (Western DPS)	LT	S			1A
Empidonax traillii extimus	Southwestern Willow Flycatcher	LE				1A
Helianthus niveus ssp. tephrodes	Algodones Sunflower	SC				
Lasiurus xanthinus	Western Yellow Bat		S			1B
Macrotus californicus	California Leaf-nosed Bat	SC		S		1B
Pholisma sonorae	Sandfood	SC		S	HS	
Phrynosoma goodei	Goode's Horned Lizard					1B
Phrynosoma mcallii	Flat-tailed Horned Lizard	CCA		S		1A
Rallus obsoletus yumanensis	Yuma Ridgway's Rail	LE				1A
Sigmodon hispidus eremicus	Yuma Hispid Cotton Rat	SC				1B
Stephanomeria exigua ssp. exigua	Small Wirelettuce			S		
Triteleopsis palmeri	Blue Sand Lily			S	SR	
Uma rufopunctata	Yuman Desert Fringe-toed Lizard	SC		S		1B

Note: Status code definitions can be found at <https://www.azgfd.com/wildlife/planning/wildlifeguidelines/statusdefinitions/>

Special Areas Documented within the Project Vicinity

Scientific Name	Common Name	FWS	USFS	BLM	NPL	SGCN
Cocopah Indian Reservation	Cocopah Indian Reservation					
Fort Yuma Indian Reservation	Fort Yuma Indian Reservation					
Lower Colorado River Gadsden Riparian Area IBA	Important Bird Area					
PCH for Coccyzus americanus	Yellow-billed Cuckoo Proposed Critical Habitat					

Note: Status code definitions can be found at <https://www.azgfd.com/wildlife/planning/wildlifeguidelines/statusdefinitions/>

Species of Greatest Conservation Need Predicted within the Project Vicinity based on Predicted Range Models

Scientific Name	Common Name	FWS	USFS	BLM	NPL	SGCN
Aix sponsa	Wood Duck					1B
Ammospermophilus harrisi	Harris' Antelope Squirrel					1B
Anthus spragueii	Sprague's Pipit	SC				1A
Aquila chrysaetos	Golden Eagle	BGA		S		1B
Athene cunicularia hypugaea	Western Burrowing Owl	SC	S	S		1B
Botaurus lentiginosus	American Bittern					1B
Buteo regalis	Ferruginous Hawk	SC		S		1B
Calypte costae	Costa's Hummingbird					1C
Castor canadensis	American Beaver					1B

Species of Greatest Conservation Need Predicted within the Project Vicinity based on Predicted Range Models

Scientific Name	Common Name	FWS	USFS	BLM	NPL	SGCN
<i>Charadrius montanus</i>	Mountain Plover	SC				1B
<i>Chilomeniscus stramineus</i>	Variable Sandsnake					1B
<i>Cistothorus palustris</i>	Marsh Wren					1C
<i>Coccyzus americanus</i>	Yellow-billed Cuckoo (Western DPS)	LT	S			1A
<i>Colaptes chrysoides</i>	Gilded Flicker			S		1B
<i>Corynorhinus townsendii pallescens</i>	Pale Townsend's Big-eared Bat	SC	S	S		1B
<i>Crotaphytus nebrius</i>	Sonoran Collared Lizard					1B
<i>Elops affinis</i>	Machete					1B
<i>Euderma maculatum</i>	Spotted Bat	SC	S	S		1B
<i>Eumops perotis californicus</i>	Greater Western Bonneted Bat	SC		S		1B
<i>Gopherus morafkai</i>	Sonoran Desert Tortoise	CCA	S	S		1A
<i>Haliaeetus leucocephalus</i>	Bald Eagle	SC, BGA	S	S		1A
<i>Heloderma suspectum</i>	Gila Monster					1A
<i>Incilius alvarius</i>	Sonoran Desert Toad					1B
<i>Ixobrychus exilis</i>	Least Bittern					1C
<i>Kinosternon sonoriense sonoriense</i>	Desert Mud Turtle			S		1B
<i>Lasiurus xanthinus</i>	Western Yellow Bat		S			1B
<i>Lithobates yavapaiensis</i>	Lowland Leopard Frog	SC	S	S		1A
<i>Lontra canadensis sonora</i>	Southwestern River Otter	SC				1B
<i>Macrotus californicus</i>	California Leaf-nosed Bat	SC		S		1B
<i>Melanerpes uropygialis</i>	Gila Woodpecker					1B
<i>Melospiza lincolni</i>	Lincoln's Sparrow					1B
<i>Melospiza aberti</i>	Abert's Towhee		S			1B
<i>Mugil cephalus</i>	Striped Mullet					1B
<i>Myiarchus tyrannulus</i>	Brown-crested Flycatcher					1C
<i>Myotis occultus</i>	Arizona Myotis	SC		S		1B
<i>Myotis velifer</i>	Cave Myotis	SC		S		1B
<i>Myotis yumanensis</i>	Yuma Myotis	SC				1B
<i>Nyctinomops femorosaccus</i>	Pocketed Free-tailed Bat					1B
<i>Oreoscoptes montanus</i>	Sage Thrasher					1C
<i>Oreothlypis luciae</i>	Lucy's Warbler					1C
<i>Ovis canadensis mexicana</i>	Mexican Desert Bighorn Sheep					1B
<i>Passerculus sandwichensis</i>	Savannah Sparrow					1B
<i>Perognathus longimembris</i>	Little Pocket Mouse	No Status				1B
<i>Phrynosoma goodei</i>	Goode's Horned Lizard					1B
<i>Phrynosoma mcallii</i>	Flat-tailed Horned Lizard	CCA		S		1A
<i>Rallus limicola</i>	Virginia Rail					1C
<i>Rallus obsoletus yumanensis</i>	Yuma Ridgway's Rail	LE				1A

Species of Greatest Conservation Need Predicted within the Project Vicinity based on Predicted Range Models

Scientific Name	Common Name	FWS	USFS	BLM	NPL	SGCN
<i>Sigmodon hispidus eremicus</i>	Yuma Hispid Cotton Rat	SC				1B
<i>Sphyrapicus nuchalis</i>	Red-naped Sapsucker					1C
<i>Spizella breweri</i>	Brewer's Sparrow					1C
<i>Tadarida brasiliensis</i>	Brazilian Free-tailed Bat					1B
<i>Toxostoma lecontei</i>	LeConte's Thrasher			S		1B
<i>Troglodytes pacificus</i>	Pacific Wren					1B
<i>Uma rufopunctata</i>	Yuman Desert Fringe-toed Lizard	SC		S		1B
<i>Vireo bellii arizonae</i>	Arizona Bell's Vireo					1B
<i>Vireo vicinior</i>	Gray Vireo		S			1C
<i>Vulpes macrotis</i>	Kit Fox	No Status				1B

Species of Economic and Recreation Importance Predicted within the Project Vicinity

Scientific Name	Common Name	FWS	USFS	BLM	NPL	SGCN
<i>Callipepla gambelii</i>	Gambel's Quail					
<i>Odocoileus hemionus</i>	Mule Deer					
<i>Ovis canadensis mexicana</i>	Mexicana Desert Bighorn Sheep					1B
<i>Pecari tajacu</i>	Javelina					
<i>Phasianus colchicus</i>	Ring-necked Pheasant					
<i>Zenaida asiatica</i>	White-winged Dove					
<i>Zenaida macroura</i>	Mourning Dove					

Project Type: Energy Storage/Production/Transfer, Energy Transfer, pipeline (gas/oil, new)

Project Type Recommendations:

During the planning stages of your project, please consider the local or regional needs of wildlife in regards to movement, connectivity, and access to habitat needs. Loss of this permeability prevents wildlife from accessing resources, finding mates, reduces gene flow, prevents wildlife from re-colonizing areas where local extirpations may have occurred, and ultimately prevents wildlife from contributing to ecosystem functions, such as pollination, seed dispersal, control of prey numbers, and resistance to invasive species. In many cases, streams and washes provide natural movement corridors for wildlife and should be maintained in their natural state. Uplands also support a large diversity of species, and should be contained within important wildlife movement corridors. In addition, maintaining biodiversity and ecosystem functions can be facilitated through improving designs of structures, fences, roadways, and culverts to promote passage for a variety of wildlife. Guidelines for many of these can be found at: <https://www.azgfd.com/wildlife/planning/wildlifeguidelines/>.

Minimize potential introduction or spread of exotic invasive species. Invasive species can be plants, animals (exotic snails), and other organisms (e.g., microbes), which may cause alteration to ecological functions or compete with or prey upon native species and can cause social impacts (e.g., livestock forage reduction, increase wildfire risk). The terms noxious weed or invasive plants are often used interchangeably. Precautions should be taken to wash all equipment utilized in the project activities before leaving the site. Arizona has noxious weed regulations (Arizona Revised Statutes, Rules R3-4-244 and R3-4-245). See Arizona Department of Agriculture website for restricted plants, <https://agriculture.az.gov/>. Additionally, the U.S. Department of Agriculture has information regarding pest and invasive plant control methods including: pesticide, herbicide, biological control agents, and mechanical control, <https://www.nrcs.usda.gov/wps/portal/nrcs/detailfull/national/water/quality/?cid=stelprdb1044769> The Department regulates the importation, purchasing, and transportation of wildlife and fish (Restricted Live Wildlife), please refer to the hunting regulations for further information <https://www.azgfd.com/hunting/regulations>.

Minimization and mitigation of impacts to wildlife and fish species due to changes in water quality, quantity, chemistry, temperature, and alteration to flow regimes (timing, magnitude, duration, and frequency of floods) should be evaluated. Minimize impacts to springs, in-stream flow, and consider irrigation improvements to decrease water use. If dredging is a project component, consider timing of the project in order to minimize impacts to spawning fish and other aquatic species (include spawning seasons), and to reduce spread of exotic invasive species. We recommend early direct coordination with Project Evaluation Program for projects that could impact water resources, wetlands, streams, springs, and/or riparian habitats.

The Department recommends that wildlife surveys are conducted to determine if noise-sensitive species occur within the project area. Avoidance or minimization measures could include conducting project activities outside of breeding seasons.

Based on the project type entered, coordination with the Environmental Protection Agency may be required (<http://www.epa.gov/>).

Based on the project type entered, coordination with State Historic Preservation Office may be required (<http://azstateparks.com/SHPO/index.html>).

Trenches should be covered or back-filled as soon as possible. Incorporate escape ramps in ditches or fencing along the perimeter to deter small mammals and herptefauna (snakes, lizards, tortoise) from entering ditches.

Based on the project type entered, coordination with U.S. Army Corps of Engineers may be required (<http://www.usace.army.mil/>)

Vegetation restoration projects (including treatments of invasive or exotic species) should have a completed site-evaluation plan (identifying environmental conditions necessary to re-establish native vegetation), a revegetation plan (species, density, method of establishment), a short and long-term monitoring plan, including adaptive management guidelines to address needs for replacement vegetation.

Project Location and/or Species Recommendations:

HDMS records indicate that one or more native plants listed on the **Arizona Native Plant Law and Antiquities Act** have been documented within the vicinity of your project area. Please contact:

Arizona Department of Agriculture
1688 W Adams St.
Phoenix, AZ 85007
Phone: 602.542.4373

<https://agriculture.az.gov/sites/default/files/Native%20Plant%20Rules%20-%20AZ%20Dept%20of%20Ag.pdf> starts on page 44

HDMS records indicate that one or more **Listed, Proposed, or Candidate** species or **Critical Habitat** (Designated or Proposed) have been documented in the vicinity of your project. The Endangered Species Act (ESA) gives the US Fish and Wildlife Service (USFWS) regulatory authority over all federally listed species. Please contact USFWS Ecological Services Offices at <http://www.fws.gov/southwest/es/arizona/> or:

Phoenix Main Office

9828 North 31st Avenue #C3
Phoenix, AZ 85051-2517
Phone: 602-242-0210
Fax: 602-242-2513

Tucson Sub-Office

201 N. Bonita Suite 141
Tucson, AZ 85745
Phone: 520-670-6144
Fax: 520-670-6155

Flagstaff Sub-Office

SW Forest Science Complex
2500 S. Pine Knoll Dr.
Flagstaff, AZ 86001
Phone: 928-556-2157
Fax: 928-556-2121

HDMS records indicate that **Western Burrowing Owls** have been documented within the vicinity of your project area. Please review the western burrowing owl resource page at:

<https://www.azgfd.com/wildlife/speciesofgreatestconservneed/burrowingowlmanagement/>.

The analysis has detected one or more **Important Bird Areas** within your project vicinity. Please see http://aziba.org/?page_id=38 for details about the Important Bird Area(s) identified in the report.

Tribal Lands are within the vicinity of your project area and may require further coordination. Please contact:

Cocopah Tribal Council

14515 S. Veterans Drive
Somerton, AZ 85350
(928) 627-2102
(928) 627-1617 (fax)

Tribal Lands are within the vicinity of your project area and may require further coordination. Please contact:

Fort Yuma-Quechan Tribe

PO Box 1899
Yuma, AZ 85366
(760) 572-0213
(760) 572-2102 (fax)